



# i-warm

The Future of Heating





## Healthier Living Environments

i-warm infrared: the natural way to heat your home.

With i-warm infrared heating, we harness warmth that naturally aligns with the human body. Designed to complement the way we've evolved to absorb and enjoy warmth, i-warm infrared provides a soothing, comfortable warmth that feels just right.



**Healthier Home**



**Healthier Planet**



**Healthier You**

## Who We Are

At Radiant Heat 360, we are committed to revolutionising home heating with cutting-edge infrared technology. Established in 2022 and based in the UK, our mission is to provide energy-efficient, smart, and affordable heating solutions that promote both comfort and well-being.

Driven by innovation, we created the i-warm brand to offer consumers a trusted name in infrared heating.

We are deeply aware of rising energy costs and are committed to making our products accessible to all. With the rapid growth of solar and battery storage in the UK, driven by the nation's push to reduce carbon emissions, we see a perfect synergy. Our heating solutions complement this renewable energy revolution, enabling households to maximise their savings while benefiting from sustainable, efficient warmth.

At Radiant Heat 360, we aim to become the leading UK provider of infrared heating, offering solutions that are safe, efficient, and sustainable. Join us in transforming the way homes are heated—creatively, affordably, and responsibly.



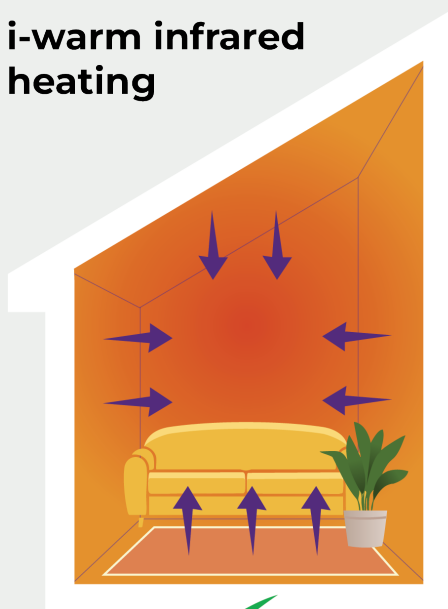
## What is i-warm Infrared?

This image illustrates the key differences between infrared heating and convection heating, helping to explain why infrared provides a more comfortable and efficient warmth.

Infrared heating works by warming objects, surfaces, and people directly rather than just heating the air. This creates an even, consistent warmth throughout the space, preventing cold spots and temperature fluctuations. As shown in the image, the heat is evenly distributed, making the entire room feel cosy and comfortable from floor to ceiling.

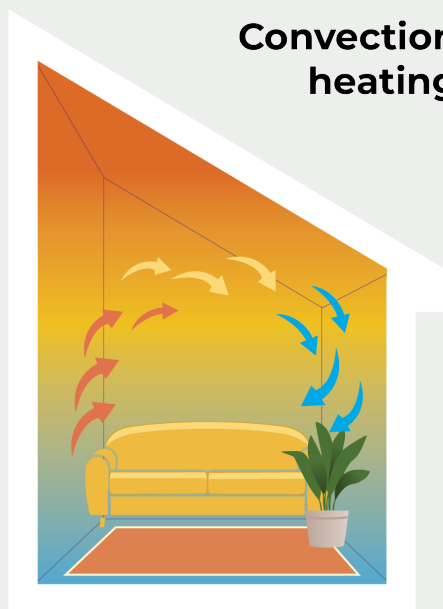
Convection heating relies on circulating warm air, which naturally rises, creating an uneven temperature distribution. The image highlights how heat gathers near the ceiling, while the lower part of the room remains much cooler. This leads to draughts, cold floors, and inefficient heating, as warm air escapes more easily.

### i-warm infrared heating



**Energy  
Efficient**

### Convection heating



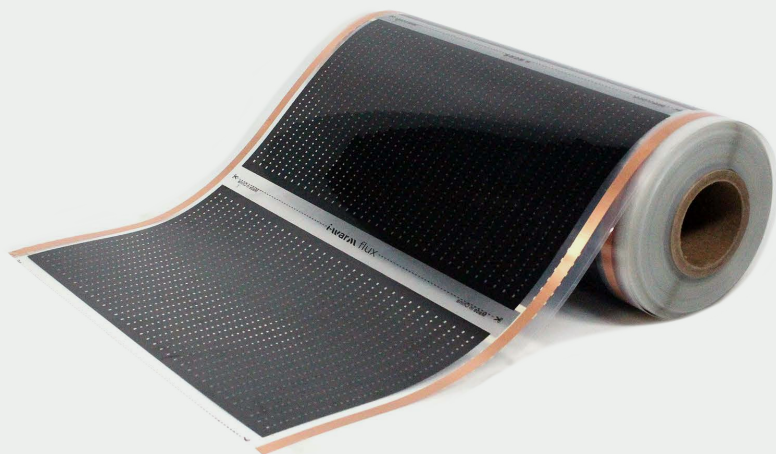
**Not Energy  
Efficient**



# i-warm flux

Retrofit | Infrared | Underfloor Heating





Model	Pack Size	Power per m <sup>2</sup>	Total Power	Weight
IWF-2M2-50CM	2m <sup>2</sup>	220W	440W	1.3KG
IWF-4M2-50CM	4m <sup>2</sup>	220W	880W	2.0KG
IWF-6M2-50CM	6m <sup>2</sup>	220W	1,320W	2.7KG
IWF-8M2-50CM	8m <sup>2</sup>	220W	1,760W	3.4KG

# i-warm flux



## i-warm flux

The i-warm flux underfloor heating system is a retrofit-friendly product, suitable to be installed with LVT & SPC flooring, engineered wood (dry-lay) as well as heat resistant carpet. It is designed to bring unparalleled comfort and efficiency to your home. Utilising ultra-thin, lightweight graphene technology that emits infrared, flux ensures a fast and even heat distribution, making it an ideal solution for modern living spaces.

### Unique Benefits:

**Even Heat Distribution:** flux underfloor heating provides a more uniform heat spread compared to traditional radiators, eliminating cold spots and ensuring a pleasant ambient temperature throughout the room.

**Invisible Heating:** Hidden beneath your floor, flux offers a clutter-free aesthetic, maintaining the visual appeal of your interiors while delivering effective heating.

**Comfort and Convenience:** The gentle, radiant heat from flux enhances comfort, especially in areas like kitchens and living rooms, where warm floors add a touch of luxury to daily routines.



# Retrofit | Infrared | Underfloor Heating

## Product Features:

**Pack Sizes:** Available in square metre packs of 2m<sup>2</sup>, 4m<sup>2</sup>, 6m<sup>2</sup>, and 8m<sup>2</sup> packs, with the option for custom lengths, flux can be tailored to fit rooms of various sizes and shapes, providing flexibility for both small and large areas.

**Versatility:** flux is compatible with multiple flooring types, such as LVT / SPC click flooring and engineered wood (dry lay), as well as heat resistant carpets. This makes it a versatile choice for rooms and aesthetics. Please always check with flooring & or carpet specifications for suitability.

**Retrofit Friendly:** Designed for easy installation, flux can be fitted over existing floors using a vapour membrane (PET) and silver backed acoustic underlay available in 3mm & 6mm, making it a perfect choice for renovations and retrofits without extensive build up.

**Efficient Heating:** Delivering 220W per m<sup>2</sup> of infrared, flux ensures a consistent and comfortable warmth throughout your space, reducing cold spots and enhancing overall comfort.

**Smart Integration:** With our Salus Smart Thermostats and app integration, controlling your underfloor heating is simple and efficient, allowing you to manage temperatures remotely and optimise energy usage.



# i-warm core

Under-Screed Application | Infrared | Underfloor Heating





# Under-Screed Application | Infrared | Underfloor Heating



Model	Pack Size	Power per m <sup>2</sup>	Total Power	Weight
IWC-1LM-50CM	1LM	220W	128W	1.7KG
IWC-2LM-50CM	2LM	220W	256W	2.3KG
IWC-3LM-50CM	3LM	220W	384W	3.2KG
IWC-4LM-50CM	4LM	220W	512W	4.1KG

# i-warm core

## i-warm core

The i-warm core is designed to be installed under screed application, a professional-grade underfloor heating product. Ideal for early build projects, core utilises encapsulated PET technology combined with graphene infrared heating, making it suitable for demanding environments and durable flooring options.

### Unique Benefits:

**Designed for Heavy-Duty Use:** The core system is built to withstand the rigours of construction environments and is compatible with durable flooring options, making it ideal for commercial properties as well as high-traffic residential areas.

**Long-Term Performance:** With its robust materials and advanced technology, core offers long-lasting performance and minimal maintenance, providing peace of mind for years to come.

**Consistent Heating:** Embedded directly into the flooring, core ensures a stable and consistent heat output, creating a comfortable and inviting atmosphere even in large spaces.



# Under-Screed Application | Infrared | Underfloor Heating



## Product Features:

**Available Lengths:** Pre-wired in linear metre lengths of 2LM, 3LM, and 4LM lengths, core offers a straightforward installation process tailored to the needs of construction professionals and large-scale projects.

**Durable Design:** The encapsulated PET technology used in core ensures that it remains durable and effective even in high-moisture environments, making it a reliable choice for kitchens, bathrooms, and other areas prone to damp conditions.

**Early Build Installation:** core is designed to be embedded in screed during the construction phase, ensuring a solid, seamless integration with heavy-duty flooring such as porcelain tiles or stone.

**Energy Efficiency:** Leveraging graphene infrared technology, core delivers powerful yet efficient heating, keeping operating costs low while maintaining a comfortable temperature throughout your space.

**Smart Control:** The system integrates smoothly with Salus Smart Thermostats, allowing for precise control of heating settings, either manually or through the Salus Smart App.

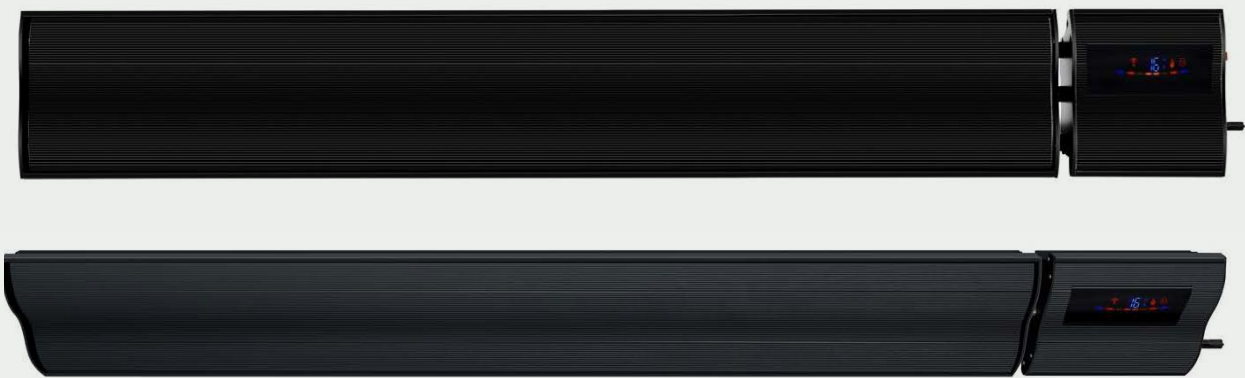


# i-warm strata

Infrared | Tower Wall & Ceiling Heating



# Infrared | Tower Wall & Ceiling Heating



Model	Finish	Power	Size (WxHxD)	Weight
IWS-12-940	Black	1200W	940x150x6.3mm	5.2KG
IWS-18-1240	Black	1800W	1240x150x6.3mm	6.2KG
IWS-24-1540	Black	2400W	1540x150x6.3mm	7.1KG

# i-warm strata

## i-warm strata

The i-warm omni system is a product that can be installed in walls & ceilings for unparalleled flexibility and versatility when heating your home. Designed with cutting-edge graphene infrared technology, the i-warm omni can be a comprehensive and innovative approach to radiant heating. Whether you're looking to heat a specific area or an entire room, i-warm omni delivers comfort and efficiency from every angle.

### Unique Benefits:

**Customisable Comfort:** The ability to install omni panels in multiple locations allows for customised heating solutions tailored to your specific comfort needs. Whether you want a warm floor in the bathroom, a heated wall in the living room, or a toasty ceiling in the bedroom, i-warm omni delivers heat where you need it most.

**Aesthetically Pleasing:** By integrating the heating system into the structure of your home, i-warm omni maintains the aesthetics of your living space. There are no bulky radiators or visible heating elements, allowing you to preserve the clean, modern lines of your interior design.

**Ideal for Hard-to-Heat Areas:** The omni system excels in hard-to-heat areas such as conservatories, basements, or large open spaces where conventional heating systems struggle to provide uniform warmth. With i-warm omni, these areas can be comfortably heated without compromising on efficiency or design.





## Infrared | Tower Wall & Ceiling Heating



### Product Features:

**Modular Sizes:** Available in two modular sizes, 78x78cm (150W) and 39x78cm (75W), the i-warm omni panels can be tailored to suit any space, from small rooms to expansive open-plan areas.

**Versatile Installation:** The i-warm omni panels are designed for use in ceilings, walls, or floors, allowing for a variety of installation options. This versatility makes them suitable for spaces where traditional heating systems might be impractical or visually intrusive.

**Advanced Technology:** Each omni panel is constructed with ABS-encapsulated graphene infrared technology. This ensures safe, effective, and consistent heat distribution across the entire surface of the panel, resulting in an even and soothing warmth that enhances comfort.

**Smart Integration:** The i-warm omni is fully compatible with our Salus Smart App and wall-mounted thermostats, offering precise control over your heating settings.

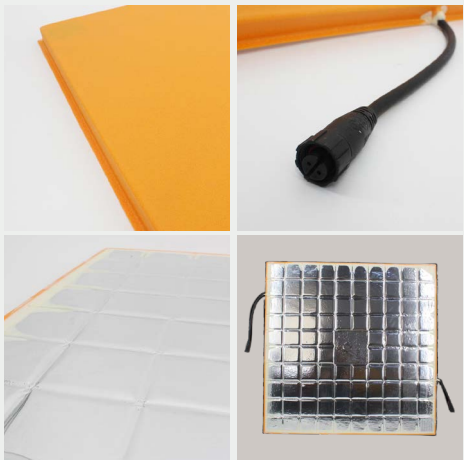
**Energy Efficiency:** The i-warm omni system is exceptionally energy efficient. It provides steady, radiant heat that warms objects and people directly, reducing energy waste and lowering heating costs. This direct heating method is not only more efficient but also creates a healthier environment by minimising air circulation and dust movement.

# i-warm omni

Infrared | Wall & Ceiling Heating



# Infrared | Wall & Ceiling Heating



Model	Power	Power per m <sup>2</sup>	Size (WxHxD)	Weight
IWO-39CM-75	75W	220W	39x78x20CM	1.0KG
IWO-78CM-150	150W	220W	78x78x20CM	2.0KG



# i-warm omni

## i-warm omni

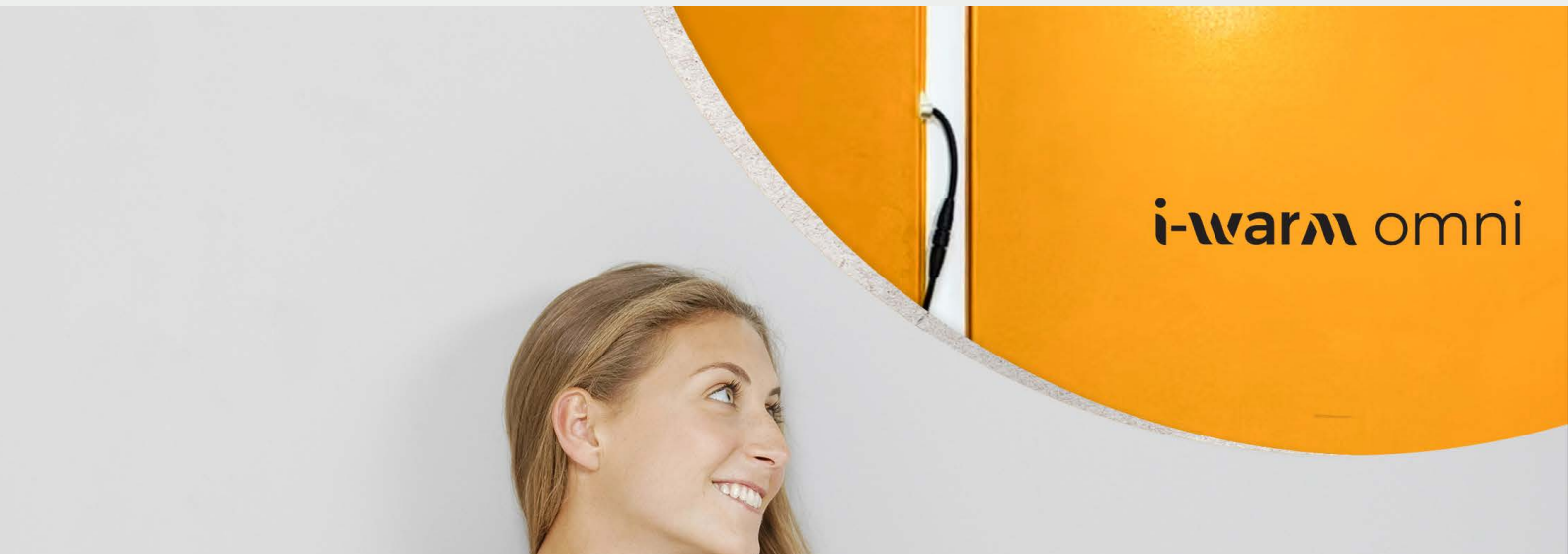
The i-warm omni system is a product that can be installed in walls & ceilings for unparalleled flexibility and versatility when heating your home. Designed with cutting-edge graphene infrared technology, the i-warm omni can be a comprehensive and innovative approach to radiant heating. Whether you're looking to heat a specific area or an entire room, i-warm omni delivers comfort and efficiency from every angle.

### Unique Benefits:

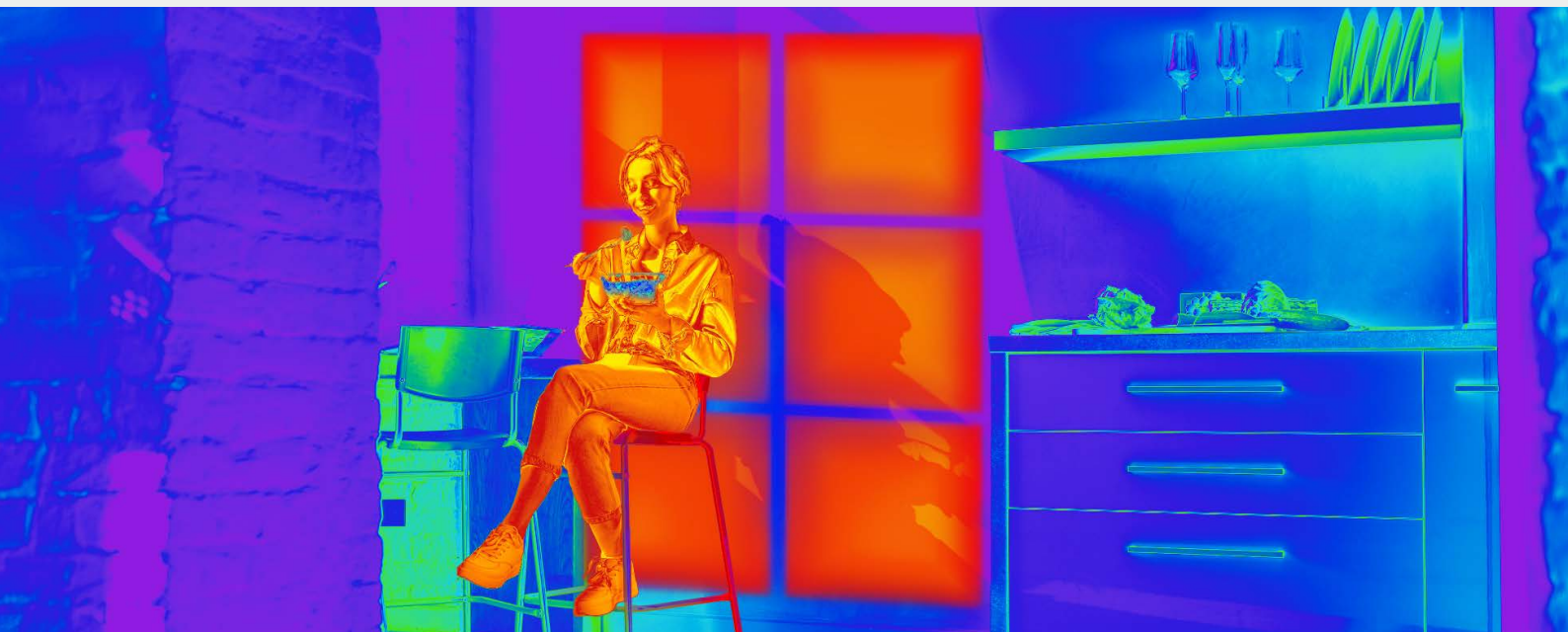
**Customisable Comfort:** The ability to install omni panels in multiple locations allows for customised heating solutions tailored to your specific comfort needs. Whether you want a warm floor in the bathroom, a heated wall in the living room, or a toasty ceiling in the bedroom, i-warm omni delivers heat where you need it most.

**Aesthetically Pleasing:** By integrating the heating system into the structure of your home, i-warm omni maintains the aesthetics of your living space. There are no bulky radiators or visible heating elements, allowing you to preserve the clean, modern lines of your interior design.

**Ideal for Hard-to-Heat Areas:** The omni system excels in hard-to-heat areas such as conservatories, basements, or large open spaces where conventional heating systems struggle to provide uniform warmth. With i-warm omni, these areas can be comfortably heated without compromising on efficiency or design.



## Infrared | Wall & Ceiling Heating



### Product Features:

**Modular Sizes:** Available in two modular sizes, 78x78cm (150W) and 39x78cm (75W), the i-warm omni panels can be tailored to suit any space, from small rooms to expansive open-plan areas.

**Versatile Installation:** The i-warm omni panels are designed for use in ceilings, walls, or floors, allowing for a variety of installation options. This versatility makes them suitable for spaces where traditional heating systems might be impractical or visually intrusive.

**Advanced Technology:** Each omni panel is constructed with ABS-encapsulated graphene infrared technology. This ensures safe, effective, and consistent heat distribution across the entire surface of the panel, resulting in an even and soothing warmth that enhances comfort.

**Smart Integration:** The i-warm omni is fully compatible with our Salus Smart App and wall-mounted thermostats, offering precise control over your heating settings.

**Energy Efficiency:** The i-warm omni system is exceptionally energy efficient. It provides steady, radiant heat that warms objects and people directly, reducing energy waste and lowering heating costs. This direct heating method is not only more efficient but also creates a healthier environment by minimising air circulation and dust movement.

# i-warm Thermostats



## **i-warm aura – IT800WIFI**

The IT800WIFI is a sophisticated smart thermostat designed exclusively for use with our i-warm aura radiators, providing seamless and efficient heating control. Offering both local operation and Wi-Fi connectivity, it allows you to manage your home's climate effortlessly.

With the SALUS Premium Lite App, you can adjust your heating remotely, ensuring your home is always at the perfect temperature, whether you're at home or away. Its intelligent energy-saving features help lower your energy bills while supporting a more sustainable lifestyle. Additionally, it is fully compatible with Amazon Alexa and Google Home, allowing you to adjust your heating using simple voice commands.

The IT800WIFI's sleek, modern design complements any interior, making it a stylish yet practical addition to your home.



## **i-warm – IWT-16A-W White**

The i-warm thermostat is available in white 16A as standard, compatible with our i-warm flux, core & omni heating products.

You can control it easily through the Tuya app on your smartphone, allowing you to manage your heating from anywhere with ease. Additionally, it integrates with Amazon Alexa and Google Home, enabling convenient voice control.

Where higher wattages are required for larger floor spaces, 32A is available on request.



## Salus – SQ610BRF Black

The SQ610BRF from SALUS is a stylish, black, slimline wireless thermostat, designed to work seamlessly with i-warm flux, core, omni and aura.

When connected to the UG800 Gateway, it can be easily controlled via the SALUS Premium Lite App, giving you the flexibility to manage your heating remotely for ultimate convenience. Additionally, it is fully compatible with Amazon Alexa and Google Home, allowing you to adjust your heating using simple voice commands.

With its ErP V certification, the SQ610BRF meets strict EU energy efficiency standards, ensuring low energy consumption without compromising on performance. This accreditation highlights its sustainability, helping you maintain a comfortable home while reducing energy use.



## Salus – SQ610RF White

The SQ610RF from SALUS is a sleek, white, slimline wireless thermostat designed for seamless compatibility with i-warm flux, core, omni & aura.

When paired with the UG800 Gateway, the SQ610RF can be controlled remotely via the SALUS Premium Lite App, allowing you to manage your heating effortlessly from anywhere. Additionally, it is fully compatible with Amazon Alexa and Google Home, allowing you to adjust your heating using simple voice commands.

This thermostat holds an ErP V certification, ensuring its energy consumption remains within strict EU-regulated limits. The ErP (Energy-related Products) directive accredits products that demonstrate high energy efficiency and sustainability, helping you reduce energy use while maintaining optimal comfort in your home.





**[www.radiantheat360.co.uk](http://www.radiantheat360.co.uk)  
[sales@radiantheat360.co.uk](mailto:sales@radiantheat360.co.uk) | 0121 667 6122**